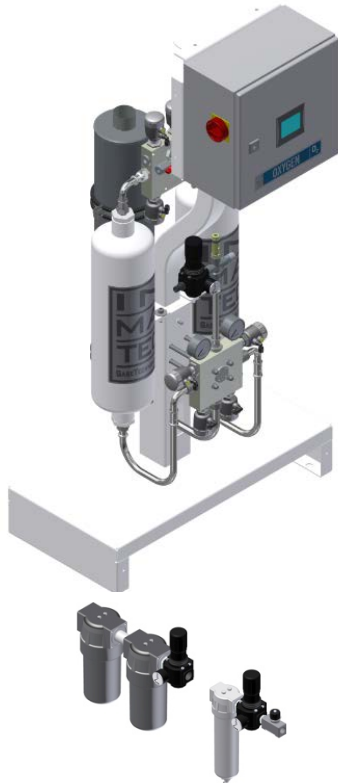


# Onsite is our World



## Technical Data & Connections

## IMT-PO OnGo 1150

Dimensions LxWxH (mm)	810 x 670 x 1645
Operating pressure	11 bar
Net weight (kg)	130
Compressed air connection	G 1/2"
O <sub>2</sub> output	G 1/2"
Silencer output	DN 63 mm
Noise level	from 55 to max. 78 dB(A)
Ambient temperature	+5° C to +40 °C
Electrical connection	230V / 50Hz (110 V / 60Hz)
Power consumption	150 Watt
Safety class	IP 54

## Option Filtration

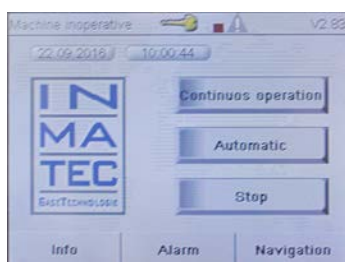
Inlet Micro filter	0,01 micron
Inlet Active carbon filter	0,003 micron
Outlet Fine filter (Product Vessel)	3 to 5 micron

<b>Inert Purity</b>	90%	92%	93%
<b>Capacity O<sub>2</sub> Nm<sup>3</sup>/h</b>	0,6	0,6	0,6
<b>Comp. air Nm<sup>3</sup>/h</b>	8,4	8,4	8,4

\* above values apply at 7 bar inlet pressure and 20° C air temperature and ambient temperature

## Compressed Air Specification

Dew point	+3 °C
Temperature range	+5° C to +50 °C
Air quality	according to ISO 8573.1, class 1 solid particulates and oil class 4 humidity, free of all contamination (free of ozone)



## Touch Control Panel

Standard	Option
Purity	Inlet pressure
Outlet pressure	Inlet temperature
English/German	Dew point
	Flow
	Temperature

<b>Comp. air Vessel</b>	90%	92%	93%						
<b>Volume l</b>	150	150	150						
<b>Product Vessel</b>	90%	92%	93%						
<b>Volume l</b>	150	150	150						
<b>Temperature In °C</b>	10	15	20	25	30	35	40	45	50
<b>Correction factor</b>	1,00	1,00	1,00	1,00	0,92	0,81	0,72	0,61	0,48
<b>Inlet pressure In bar</b>	6	6,5	7	7,5	8	8,5	9	9,5	10
<b>Correction factor</b>	1,00	1,00	1,00	1,00	0,95	0,90	0,85	0,80	0,75

# Onsite is our World



## Technical Data & Connections

## IMT-PO OnGo 1250

Dimensions LxWxH (mm)	810 x 670 x 1645
Operating pressure	11 bar
Net weight (kg)	145
Compressed air connection	G 1/2"
O <sub>2</sub> output	G 1/2"
Silencer output	DN 63 mm
Noise level	from 55 to max. 78 dB(A)
Ambient temperature	+5° C to +40 °C
Electrical connection	230V / 50Hz (110 V / 60Hz)
Power consumption	150 Watt
Safety class	IP 54

## Option Filtration

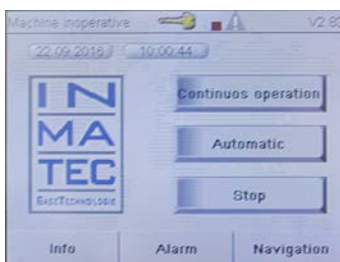
Inlet Micro filter	0,01 micron
Inlet Active carbon filter	0,003 micron
Outlet Fine filter (Product Vessel)	3 to 5 micron

Inert Purity	90%	92%	93%
Capacity O <sub>2</sub> Nm <sup>3</sup> /h	1,2	1,1	1,1
Comp. air Nm <sup>3</sup> /h	16,8	16,8	16,8

\* above values apply at 7 bar inlet pressure and 20 °C air temperature and ambient temperature

## Compressed Air Specification

Dew point	+3 °C
Temperature range	+5° C to +50 °C
Air quality	according to ISO 8573.1, class 1 solid particulates and oil class 4 humidity, free of all contamination (free of ozone)



## Touch Control Panel

Standard	Option
Purity	Inlet pressure
Outlet pressure	Inlet temperature
English/German	Dew point
	Flow

Comp. air Vessel	90%	92%	93%							
Volume l	150	150	150							
Product Vessel	90%	92%	93%							
Volume l	150	150	150							
Temperature In °C	10	15	20	25	30	35	40	45	50	
Correction factor	1,00	1,00	1,00	1,00	0,92	0,81	0,72	0,61	0,48	
Inlet pressure In bar	6	6,5	7	7,5	8	8,5	9	9,5	10	
Correction factor	1,00	1,00	1,00	1,00	0,95	0,90	0,85	0,80	0,75	

# Onsite is our World



## Technical Data & Connections

## IMT-PO OnGo 1350

Dimensions LxWxH (mm)	810 x 680 x 1645
Operating pressure	11 bar
Net weight (kg)	280
Compressed air connection	G 1/2"
O <sub>2</sub> output	G 1/2"
Silencer output	DN 63 mm
Noise level	from 55 to max. 78 dB(A)
Ambient temperature	+5° C to +40 °C
Electrical connection	230V / 50Hz (110 V / 60Hz)
Power consumption	150 Watt
Safety class	IP 54

## Option Filtration

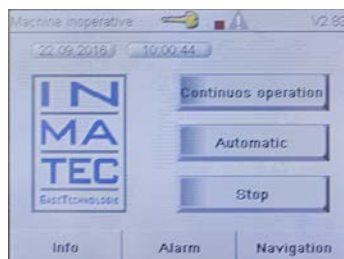
Inlet Micro filter	0,01 micron
Inlet Active carbon filter	0,003 micron
Outlet Fine filter (Product Vessel)	3 to 5 micron

Inert Purity	90%	92%	93%
Capacity O <sub>2</sub> Nm <sup>3</sup> /h	2,4	2,3	2,3
Comp. air Nm <sup>3</sup> /h	29,4	29,4	29,4

\* above values apply at 7 bar inlet pressure and 20° C air temperature and ambient temperature

## Compressed Air Specification

Dew point	+3 °C
Temperature range	+5° C to +50 °C
Air quality	according to ISO 8573.1, class 1 solid particulates and oil class 4 humidity, free of all contamination (free of ozone)



## Touch Control Panel

Standard	Option
Purity	Inlet pressure
Outlet pressure	Inlet temperature
English/German	Dew point
	Flow
	Temperature

Comp. air Vessel	90%	92%	93%
Volume l	150	150	150

Product Vessel	90%	92%	93%
Volume l	150	150	150

Temperature In °C	10	15	20	25	30	35	40	45	50
Correction factor	1,00	1,00	1,00	1,00	0,92	0,81	0,72	0,61	0,48
Inlet pressure in bar	6	6,5	7	7,5	8	8,5	9	9,5	10
Correction factor	1,00	1,00	1,00	1,00	0,95	0,90	0,85	0,80	0,75

# Onsite is our World



## Technical Data & Connections

## IMT-PO OnGo 1450

Dimensions LxWxH (mm)	810 x 680 x 1645
Operating pressure	11 bar
Net weight (kg)	470
Compressed air connection	G 1/2"
O <sub>2</sub> output	G 1/2"
Silencer output	DN 63 mm
Noise level	from 55 to max. 78 dB(A)
Ambient temperature	+5° C to +40 °C
Electrical connection	230V / 50Hz (110 V / 60Hz)
Power consumption	150 Watt
Safety class	IP 54

## Option Filtration

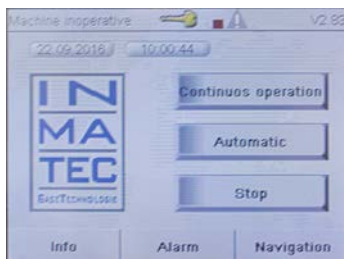
Inlet Micro filter	0,01 micron
Inlet Active carbon filter	0,003 micron
Outlet Fine filter (Product Vessel))	3 to 5 micron

Inert Purity	90%	92%	93%
Capacity O <sub>2</sub> Nm <sup>3</sup> /h	3,6	3,5	3,3
Comp. air Nm <sup>3</sup> /h	37,8	37,8	37,8

\* above values apply at 7 bar inlet pressure and 20° C air temperature and ambient temperature

## Compressed Air Specification

Dew point	+3 °C
Temperature range	+5° C to +50 °C
Air quality	according to ISO 8573.1, class 1 solid particulates and oil class 4 humidity, free of all contamination (free of ozone)



## Touch Control Panel

Standard	Option
Purity	Inlet pressure
Outlet pressure	Inlet temperature
English/German	Dew point
	Flow
	Temperature

Comp. air Vessel	90%	92%	93%
Volume l	270	270	270
Product Vessel	90%	92%	93%
Volume l	270	270	270

Temperature In °C	10	15	20	25	30	35	40	45	50
Correction factor	1,00	1,00	1,00	1,00	0,92	0,81	0,72	0,61	0,48
Inlet pressure In bar	6	6,5	7	7,5	8	8,5	9	9,5	10
Correction factor	1,00	1,00	1,00	1,00	0,95	0,90	0,85	0,80	0,75

# Onsite is our World



## Technical Data & Connections

## IMT-PO OnGo 2150

Dimensions LxWxH (mm)	960 x 690 x 2450
Operating pressure	11 bar
Net weight (kg)	470
Compressed air connection	G 1/2"
O <sub>2</sub> output	G 1/2"
Silencer output	DN 125 mm
Noise level	from 55 to max. 78 dB(A)
Ambient temperature	+5° C to +40 °C
Electrical connection	230V / 50Hz (110 V / 60Hz)
Power consumption	150 Watt
Safety class	IP 54

## Option Filtration

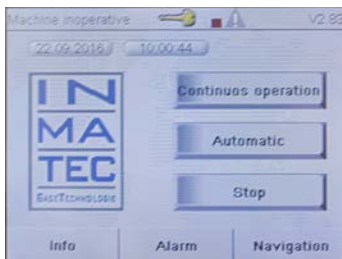
Inlet Micro filter	0,01 micron
Inlet Active carbon filter	0,003 micron
Outlet Fine filter (Product Vessel)	3 to 5 micron

Inert Purity	90%	92%	93%
Capacity O <sub>2</sub> Nm <sup>3</sup> /h	5,4	5,2	5,0
Comp. air Nm <sup>3</sup> /h	54,6	54,6	54,6

\* above values apply at 7 bar inlet pressure and 20° C air temperature and ambient temperature

## Compressed Air Specification

Dew point	+3 °C
Temperature range	+5° C to +50 °C
Air quality	according to ISO 8573.1, class 1 solid particulates and oil class 4 humidity, free of all contamination (free of ozone)



## Touch Control Panel

Standard	Option
Purity	Inlet pressure
Outlet pressure	Inlet temperature
English/German	Dew point
	Flow
	Temperature

Comp. air Vessel	90%	92%	93%
Volume l	270	270	270
Product Vessel	90%	92%	93%
Volume l	270	270	270

Temperature In °C	10	15	20	25	30	35	40	45	50
Correction factor	1,00	1,00	1,00	1,00	0,92	0,81	0,72	0,61	0,48
Inlet pressure in bar	6	6,5	7	7,5	8	8,5	9	9,5	10
Correction factor	1,00	1,00	1,00	1,00	0,95	0,90	0,85	0,80	0,75

# Onsite is our World



## Technical Data & Connections

## IMT-PO OnGo 2350

Dimensions LxWxH (mm)	960 x 690 x 2450
Operating pressure	11 bar
Net weight (kg)	490
Compressed air connection	G 1"
O <sub>2</sub> output	G ½"
Silencer output	DN 125 mm
Noise level	from 55 to max. 78 dB(A)
Ambient temperature	+5° C to +40 °C
Electrical connection	230V / 50Hz (110 V / 60Hz)
Power consumption	150 Watt
Safety class	IP 54

## Option Filtration

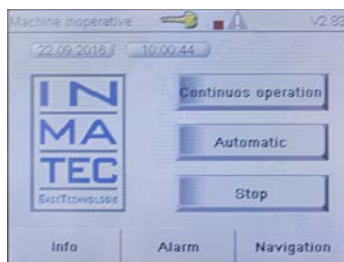
Inlet Micro filter	0,01 micron
Inlet Active carbon filter	0,003 micron
Outlet Fine filter (Product Vessel)	3 to 5 micron

<b>Inert Purity</b>	90%	92%	93%
<b>Capacity O<sub>2</sub> Nm<sup>3</sup>/h</b>	8,9	8,5	8,1
<b>Comp. air Nm<sup>3</sup>/h</b>	105,0	105,0	105,0

\* above values apply at 7 bar inlet pressure and 20° C air temperature and ambient temperature

## Compressed Air Specification

Dew point	+3 °C
Temperature range	+5° C to +50 °C
Air quality	according to ISO 8573.1, class 1 solid particulates and oil class 4 humidity, free of all contamination (free of ozone)



## Touch Control Panel

Standard	Option
Purity	Inlet pressure
Outlet pressure	Inlet temperature
English/German	Dew point
	Flow
	Temperature

<b>Comp. air Vessel</b>	90%	92%	93%
<b>Volume l</b>	270	270	270

<b>Product Vessel</b>	90%	92%	93%
<b>Volume l</b>	270	270	270

<b>Temperature In °C</b>	10	15	20	25	30	35	40	45	50
<b>Correction factor</b>	1,00	1,00	1,00	1,00	0,92	0,81	0,72	0,61	0,48
<b>Inlet pressure in bar</b>	6	6,5	7	7,5	8	8,5	9	9,5	10
<b>Correction factor</b>	1,00	1,00	1,00	1,00	0,95	0,90	0,85	0,80	0,75

# Onsite is our World



## Technical Data & Connections

## IMT-PO OnGo 2550

Dimensions LxWxH (mm)	1100 x 831 x 2200
Operating pressure	11 bar
Net weight (kg)	800
Compressed air connection	G 1"
O <sub>2</sub> output	G ½"
Silencer output	DN 125 mm
Noise level	from 55 to max. 78 dB(A)
Ambient temperature	+5° C to +40 °C
Electrical connection	230V / 50Hz (110 V / 60Hz)
Power consumption	150 Watt
Safety class	IP 54

## Option Filtration

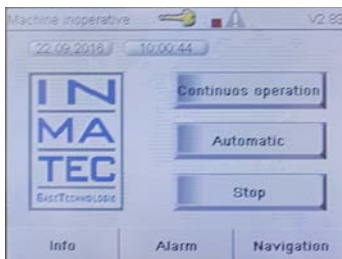
Inlet Micro filter	0,01 micron
Inlet Active carbon filter	0,003 micron
Outlet Fine filter (Product Vessel)	3 to 5 micron

Inert Purity	90%	92%	93%
Capacity O <sub>2</sub> Nm <sup>3</sup> /h	10,9	10,4	9,9
Comp. air Nm <sup>3</sup> /h	120,0	120,0	120,0

\* above values apply at 7 bar inlet pressure and 20° C air temperature and ambient temperature

## Compressed Air Specification

Dew point	+3 °C
Temperature range	+5° C to +50 °C
Air quality	according to ISO 8573.1, class 1 solid particulates and oil class 4 humidity, free of all contamination (free of ozone)



## Touch Control Panel

Standard	Option
Purity	Inlet pressure
Outlet pressure	Inlet temperature
English/German	Dew point
	Flow
	Temperature

Comp. air Vessel	90%	92%	93%
Volume l	270	270	270

Product Vessel	90%	92%	93%
Volume l	270	270	270

Temperature in °C	10	15	20	25	30	35	40	45	50
Correction factor	1,00	1,00	1,00	1,00	0,92	0,81	0,72	0,61	0,48
Inlet pressure in bar	6	6,5	7	7,5	8	8,5	9	9,5	10
Correction factor	1,00	1,00	1,00	1,00	0,95	0,90	0,85	0,80	0,75

# Onsite is our World



## Technical Data & Connections

## IMT-PO OnGo 3000

Dimensions LxWxH (mm)	960 x 690 x 2450
Operating pressure	11 bar
Net weight (kg)	830
Compressed air connection	G 1"
O <sub>2</sub> output	G ½"
Silencer output	DN 125 mm
Noise level	from 55 to max. 78 dB(A)
Ambient temperature	+5° C to +40 °C
Electrical connection	230V / 50Hz (110 V / 60Hz)
Power consumption	150 Watt
Safety class	IP 54

## Option Filtration

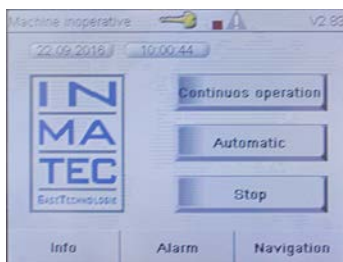
Inlet Micro filter	0,01 micron
Inlet Active carbon filter	0,003 micron
Outlet Fine filter (Product Vessel)	3 to 5 micron

Inert Purity	90%	92%	93%
Capacity O <sub>2</sub> Nm <sup>3</sup> /h	12,9	12,3	11,6
Comp. air Nm <sup>3</sup> /h	134,0	134,0	134,0

\* above values apply at 7 bar inlet pressure and 20° C air temperature and ambient temperature

## Compressed Air Specification

Dew point	+3 °C
Temperature range	+5° C to +50 °C
Air quality	according to ISO 8573.1, class 1 solid particulates and oil class 4 humidity, free of all contamination (free of ozone)



## Touch Control Panel

Standard	Option
Purity	Inlet pressure
Outlet pressure	Inlet temperature
English/German	Dew point
	Flow
	Temperature

Comp. air Vessel	90%	92%	93%
Volume l	500	500	500
Product Vessel	90%	92%	93%
Volume l	500	500	500

Temperature In °C	10	15	20	25	30	35	40	45	50
Correction factor	1,00	1,00	1,00	1,00	0,92	0,81	0,72	0,61	0,48
Inlet pressure in bar	6	6,5	7	7,5	8	8,5	9	9,5	10
Correction factor	1,00	1,00	1,00	1,00	0,95	0,90	0,85	0,80	0,75



# Onsite is our World



## Technical Data & Connections

## IMT-PO OnGo 3250

Dimensions LxWxH (mm)	1610 x 840 x 2220
Operating pressure	11 bar
Net weight (kg)	930
Compressed air connection	G 1"
O <sub>2</sub> output	G ½"
Silencer output	DN 125 mm
Noise level	from 55 to max. 78 dB(A)
Ambient temperature	+5° C to +40 °C
Electrical connection	230V / 50Hz (110 V / 60Hz)
Power consumption	150 Watt
Safety class	IP 54

## Option Filtration

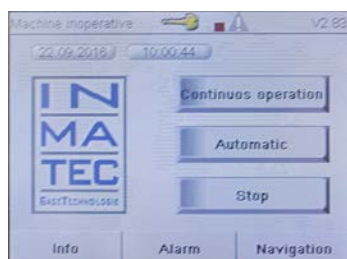
Inlet Micro filter	0,01 micron
Inlet Active carbon filter	0,003 micron
Outlet Fine filter (Product Vessel)	3 to 5 micron

Inert Purity	90%	92%	93%
Capacity O <sub>2</sub> Nm <sup>3</sup> /h	18,0	17,2	16,8
Comp. air Nm <sup>3</sup> /h	226,8	226,2	225,7

\* above values apply at 7 bar inlet pressure and 20° C air temperature and ambient temperature

## Compressed Air Specification

Dew point	+3 °C
Temperature range	+5° C to +50 °C
Air quality	according to ISO 8573.1, class 1 solid particulates and oil class 4 humidity, free of all contamination (free of ozone)



## Touch Control Panel

Standard	Option
Purity	Inlet pressure
Outlet pressure	Inlet temperature
English/German	Dew point
	Flow
	Temperature

Comp. air Vessel	90%	92%	93%						
Volume l	1.000	1.000	1.000						
Product Vessel	90%	92%	93%						
Volume l	1.000	1.000	1.000						
Temperature in °C	10	15	20	25	30	35	40	45	50
Correction factor	1,00	1,00	1,00	1,00	0,92	0,81	0,72	0,61	0,48
Inlet pressure in bar	6	6,5	7	7,5	8	8,5	9	9,5	10
Correction factor	1,00	1,00	1,00	1,00	0,95	0,90	0,85	0,80	0,75